

PUERTO LAJAS LIVING

2.3 16 apartments in the heart of Fuerteventura



In the heart of the tranquil coastal town of Puerto Lajas, in the north of the island of Fuerteventura, an exclusive complex of 16 townhouses is being launched. These homes are designed to offer quality of life, functionality, and a direct connection with the island's natural environment.

The residences are integrated into the coastal landscape of Puerto Lajas, an area renowned for its tranquility, accessibility, and proximity to the sea.

The design respects the local aesthetic and prioritizes energy efficiency and interior comfort.

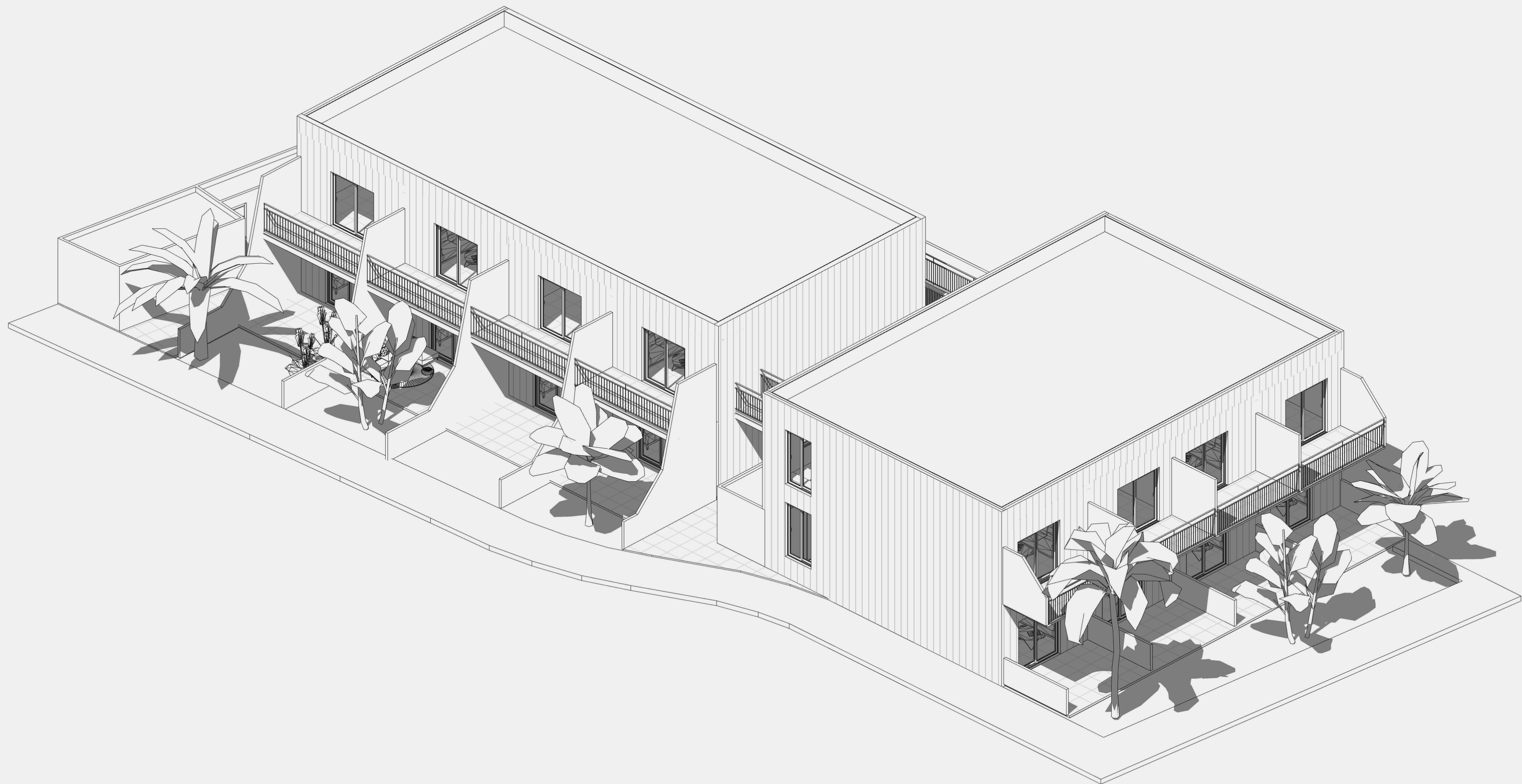


Puerto Lajas: a hidden gem

Puerto Lajas is a true hidden gem on the coast. Its peaceful beaches, relaxed atmosphere, and excellent connection to Puerto del Rosario make it a privileged location. With all essential services available, it's an ideal choice for a permanent residence, a second home, or a smart investment for the future.











Homes designed for light, tranquility, and quality living

Semi-detached apartments with a terrace, featuring one bedroom and a modern design with clean lines. They combine contemporary aesthetics with durable materials perfectly suited to Fuerteventura's climate.

Each home includes:

- 1 spacious bedroom
- 1 bathroom
- Living-dining area with integrated kitchen
- Private front garden with native plants or terrace with views and a chill-out area
- Natural light in every room
- High-quality finishes with sustainable materials
- Rear patio with storage room and laundry area



The interior spaces have been designed to offer functionality, comfort, and brightness.

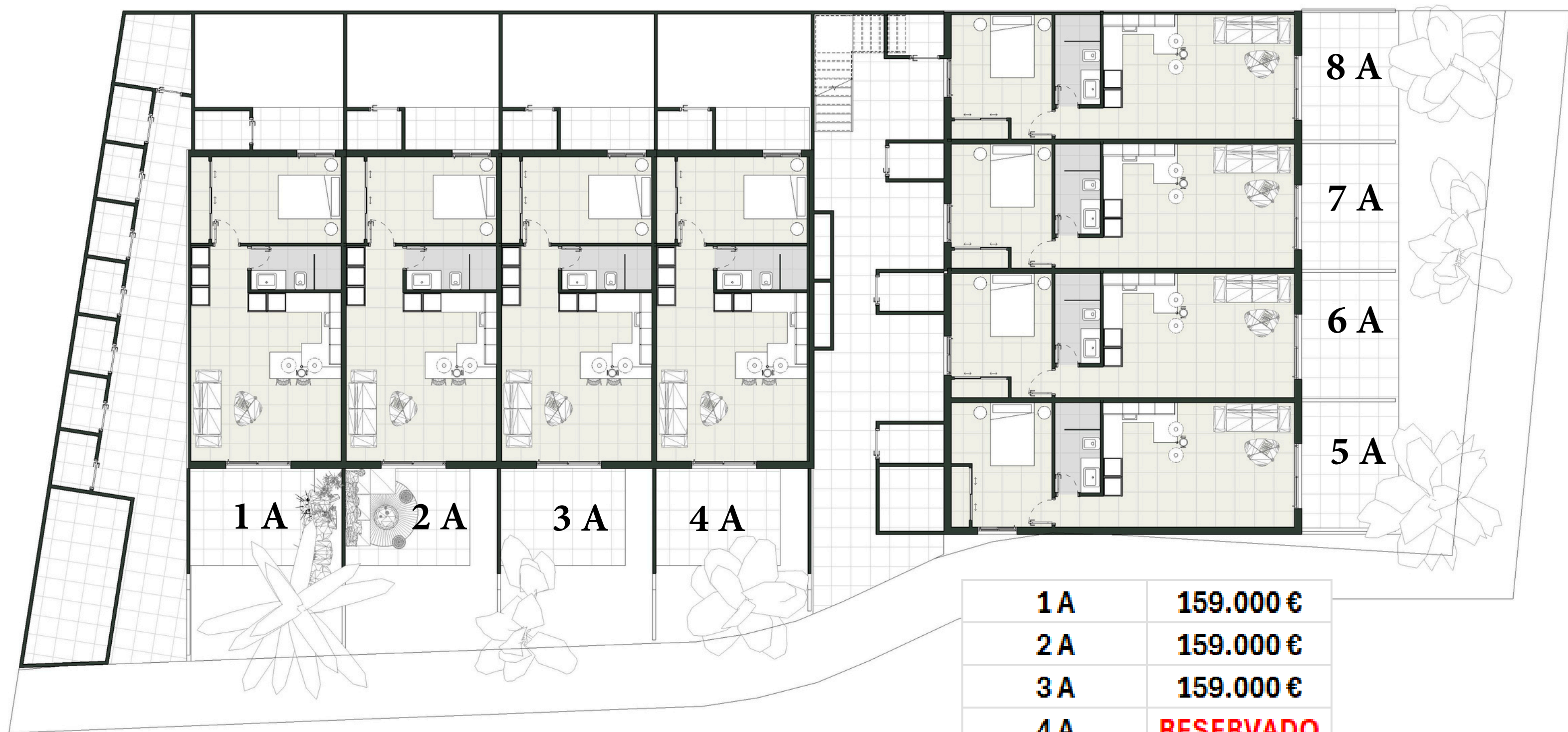
The layout makes the most of every corner, using high-quality materials and elegant finishes.

The bedrooms are quiet and inviting, perfect for relaxation, with plenty of natural light and excellent ventilation.



The integrated kitchens combine modern aesthetics and practicality, ideal for enjoying moments together.

Every detail has been designed to create a serene, welcoming home in harmony with Fuerteventura's natural surroundings.



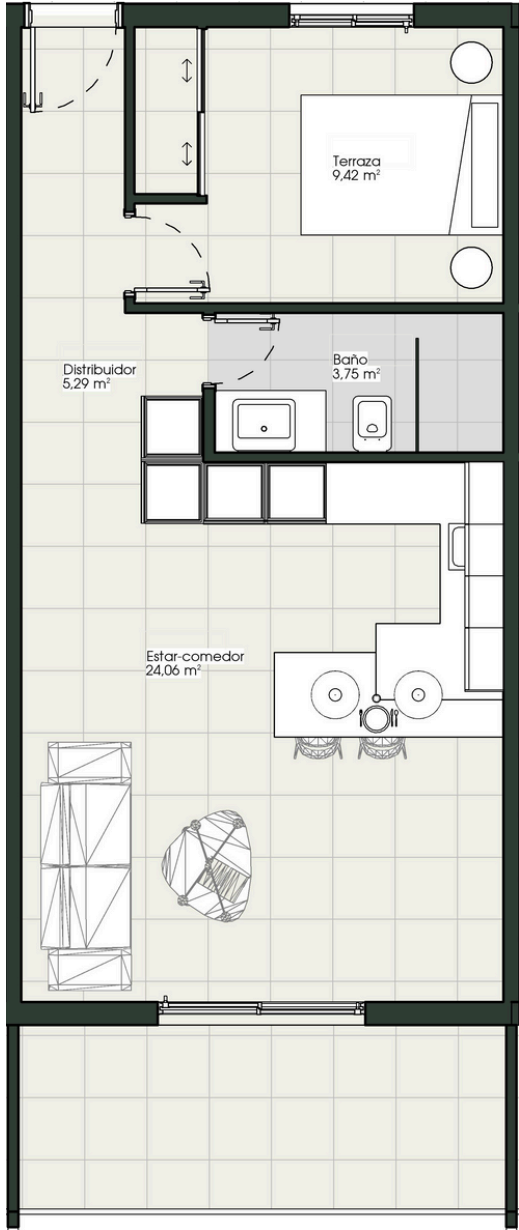
1 A	159.000 €
2 A	159.000 €
3 A	159.000 €
4 A	RESERVADO
5 A	RESERVADO
6 A	152.000 €
7 A	152.000 €
8 A	152.000 €

PLANTA BAJA GENERAL



1 B	167.000 €
2 B	167.000 €
3 B	RESERVADO
4 B	RESERVADO
5 B	179.000 €
6 B	179.000 €
7 B	RESERVADO
8 B	RESERVADO

PLANTA PRIMERA GENERAL



APARTMENT ON THE FIRST FLOOR

Approximate room areas:

Front terrace: variable — approx. 8.00 m²

Storage room: 2.04 m²

Bedroom: 9.42 m²

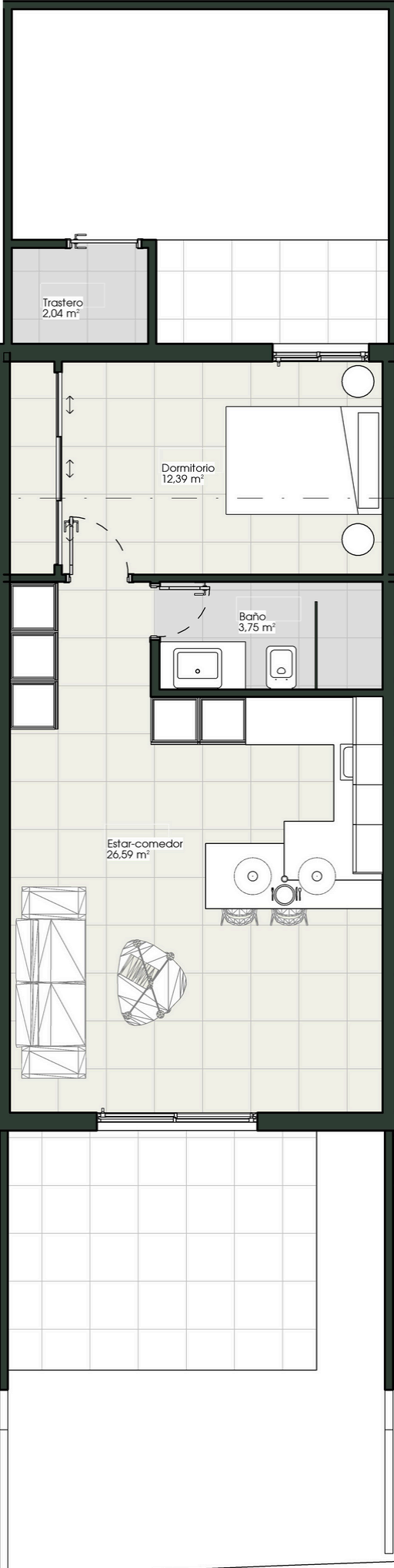
Hallway: 5.29 m²

Bathroom: 3.75 m²

Living–dining area: 24.06 m²

Share of common areas: 9.26 m²

TOTAL: 61.82 m²



APARTMENT ON THE GROUND FLOOR

Approximate room areas:

Front terrace: variable — approx. 17.36 m²

Storage room: 2.04 m²

Bedroom: 12.39 m²

Bathroom: 3.75 m²

Living–dining area: 26.59 m²

Share of common areas: 9.26 m²

Rear terrace: variable — approx. 25,5 m²

TOTAL: 96.89 m²